

Official Presidential Preference Primary Ballot

State of Kansas, County of Johnson

Republican Party

March 19, 2024



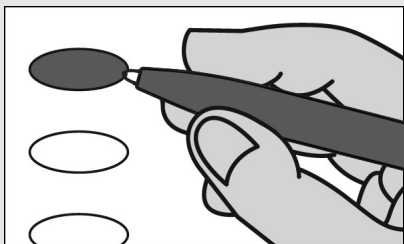
Instructions to Voters

If you tear, deface, or make a mistake and wrongfully mark any ballot, you must return it to an election official and receive a new ballot.

Making Selections

Mark your ballot in black ink. Completely fill in the oval ● to the left of your choice.

To vote for "none of the names shown" darken the oval ● to the left of such words.



National Offices

For President

Vote for One

- Donald J. Trump
- Nikki R. Haley
- Ron Desantis
- Ryan L. Binkley
- None of the names shown



Stamp

This side is intentionally left blank.